



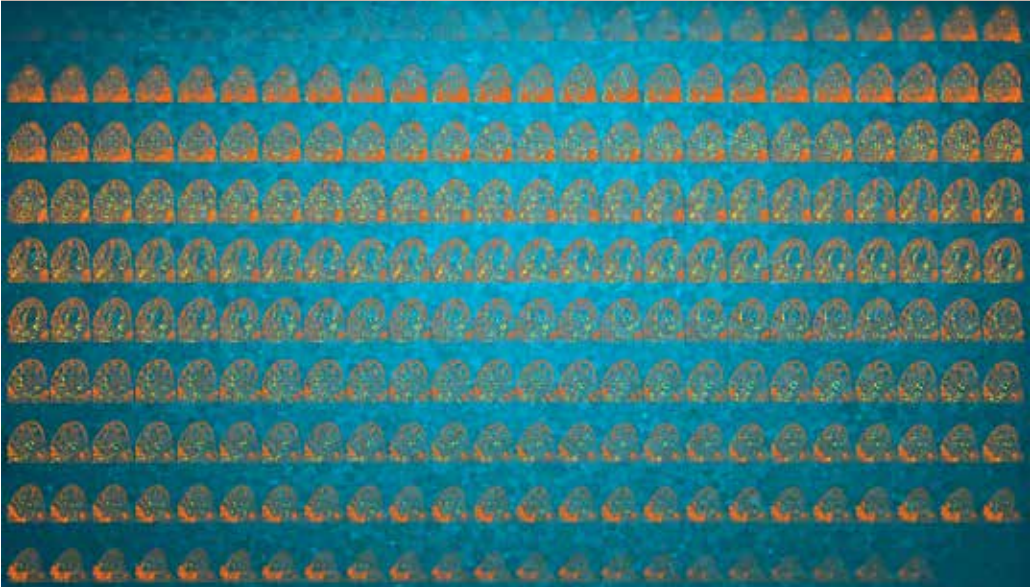
Universität  
Zürich<sup>UZH</sup>

**ETH** zürich



Zurich-Basel Plant Science Center

**Master's Studies in Plant Sciences**  
for students enrolled in affiliated Master's  
programs



**Plant Sciences**



## General Information

The Zurich-Basel Plant Science Center (PSC) is a competence center linking and supporting the plant science research community of the University of Zurich, ETH Zurich and the University of Basel.

The PSC promotes fundamental and applied research in the plant sciences. We seek creative approaches to research mentoring and coursework for students and post-docs, and we provide platforms for interactions with peers, policymakers, industry and stakeholders. We help graduate students put together the right package of classes in the plant sciences, statistics, policy, communication and other transferable skills. Finally, we help match students and PIs with appropriate funding sources to address some of society's most important questions.

[www.plantsciences.ch](http://www.plantsciences.ch)

### Degree

Students will obtain their Master's degree from the University of Zurich, ETH Zurich or the University of Basel.

### Length of the program

2 years

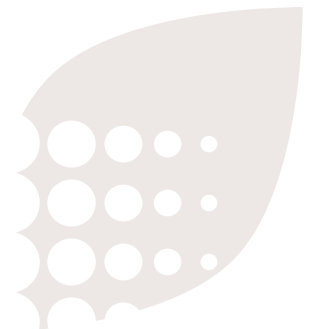
### Information

[www.plantsciences.ch/teaching/masters.html](http://www.plantsciences.ch/teaching/masters.html)

### Contact

Dr. Melanie Paschke

[paschkme@ethz.ch](mailto:paschkme@ethz.ch) / +41 632 02 71



## Who can join?

Please note that the PSC does not offer a free-standing Master's program. To be eligible to register for the PSC Master's modules, students must first be accepted into and enrolled at one of the 6 affiliated Master's programs.

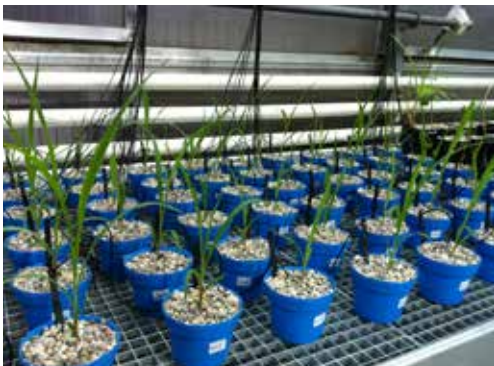
For PSC-organized modules, register through the PSC webpage:

[www.plantsciences.ch/teaching/masters/registration.html](http://www.plantsciences.ch/teaching/masters/registration.html)

For self-learners, content for most of our Master's classes is accessible via our online learning platform:

[www.olat.uzh.ch](http://www.olat.uzh.ch) -> Learning Resources -> Catalog -> PSC

To obtain ECTS credit, however, please enroll in term-based classes that include assessment criteria.



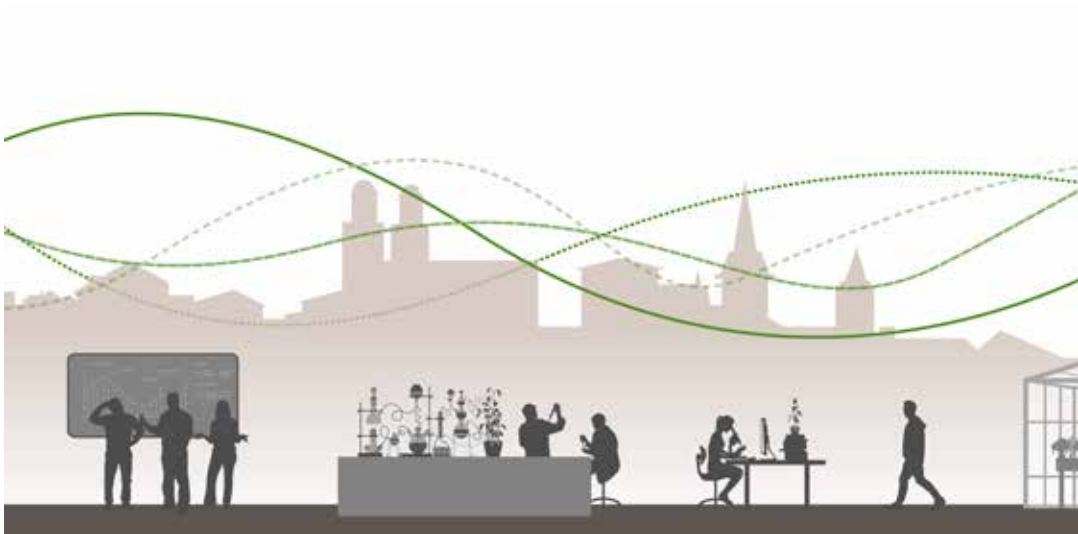
# Master's Studies in Plant Sciences

The Zurich-Basel Plant Science Center (PSC) coordinates Master's courses in the field of plant sciences at three leading Swiss universities: the University of Zurich, ETH Zurich, and the University of Basel.

## **Affiliated Master's Programs**

Enrollment in one of the following programs grants students access to PSC courses and to plant science courses from the University of Zurich, ETH Zurich, and University of Basel:

- Master of Science in Biology, Plant Sciences, Department of Biology, ETH Zurich
- Master in Environmental Sciences, Major in Ecology and Evolution, Department of Environmental Sciences, ETH Zurich
- Master of Agroecosystem Science, Major in Crop Science, Department of Agricultural and Food Sciences, ETH Zurich
- Master in Biology, Plant Sciences, Faculty of Science, University of Zurich
- Master in Ecology, Department of Environmental Sciences, University of Basel
- Master in Plant Sciences, Department of Environmental Sciences, University of Basel



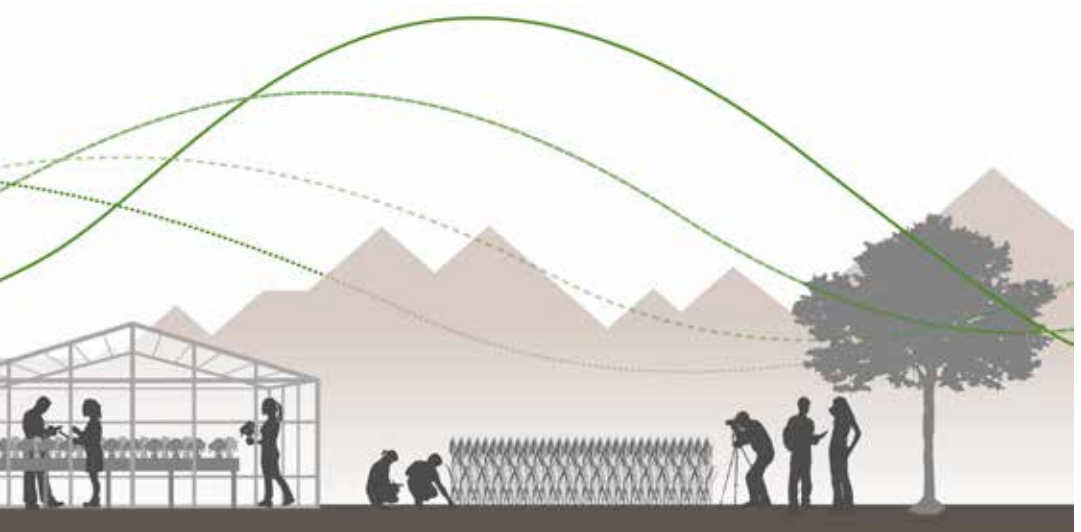
## Courses and Modules for Master's Students

The PSC offers students several specialized Master's course modules and access to more than 100 plant science courses from the three universities. Students may build these courses into their personally-tailored curriculum, counting them towards degree completion requirements at their home university.

A broad range of disciplines are represented in this set of programs, including:

- Biochemistry
- Biotechnology
- Genetics
- Ecology
- Agronomy
- Physiology
- Systematics

Students may acquire up to 30 ECTS through PSC Master's courses outside their home Master's program, in accordance with the regulations of their home institution. The courses are counted as mandatory elective courses (Wahlpflichtkurse) towards the Master's degree.



# Master's Modules organized by the PSC

## PSC Interdisciplinary Courses

The PSC organizes courses that integrate knowledge about plants and their environments. Synergies between participating research groups and current subject matter enable engaging, interdisciplinary approaches to questions in the plant sciences. Scales range from molecular to ecosystem levels, and topics from fundamental science to applications.

**PSC Master's Module «Integrative Plant Sciences» (two-course module)**

- Challenges in Plant Sciences (Colloquium), 2 ECTS
- Sustainable Plant Systems (Seminar and online course), 2 ECTS

## PSC Training in Research Conduct

At the Master's level, students are joining the scientific community. They must adopt the codes of professional conduct in research. In this course, Master's students increase their knowledge of the rules, regulations and guidelines of responsible conduct in their research fields. We train the students in the process of well-reasoned moral decision (Bebeau 1995) on how to deal with uncertainty on questions of authorship and credit attribution, data treatment and interpretation, communication with the public, and the role of graduate students in the research community.

**PSC Master's Module «Responsible Conduct in Research»**

- Learn about the professional codes of responsible conduct in research, 1 ECTS

## PSC Writing Platforms

At the Bachelor's and Master's level, the PSC offers online training platforms in scientific writing that can be used for self-study. These platforms are open to all students needing to develop scientific writing skills. With the process-based approach of the PSC writing platforms, students are guided to mastery of scientific writing and can access self-learning tutorials, a guided writing lab, and guidelines for different kinds of writing products. Access is via a Uni, ETH, FH, or PH login.

**Bachelor level:  
Wissenschaftliches Schreiben (WiSch)**

<https://moodle-app2.let.ethz.ch/course/view.php?id=132>

**Master's level:  
Scientific Writing Practice (SkiPS)**

<https://moodle-app2.let.ethz.ch/course/view.php?id=134>